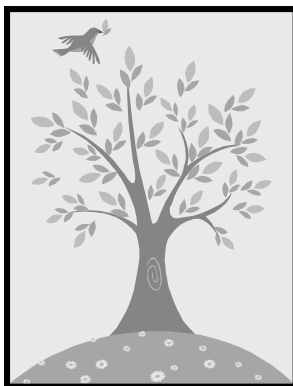


# Reedsville News

April 2009

## Village Wide Rummage Sales

Join the Reedsville Village Wide Rummage Sales. They will be May 8th and 9th. Sign up today - 754-4370. Sponsored by the Reedsville Lions.



"No kind action ever stops with itself. One kind action leads to another. Good example is followed. A single act of kindness throws out roots in all directions, and the roots spring up and make new trees. The greatest work that kindness does to others is that it makes them kind themselves."  
- Amelia Earhart

AMVETS Brat Fry  
Saturday, April 25th  
9am - 3pm

At the Knights of Columbus Clubhouse  
located across the street from the  
Denmark State Bank.

Serving Burgers and Brats

Proceeds go towards the  
AMVETS Memorial Scholarship Fund.  
Support your AMVETS!

## Preservation of St. Mary's

Thank you to everyone for participating in our Bohemian Day Dinner and our brat/burger fry, bake sale, and craft sale in March. We appreciate your support. We would like everyone we know that the St. Mary's Historical Building is available for dinners, anniversaries, family reunions, showers, birthday parties, and more. A rental fee would be charged. It is a great place to hold your activities, call 754-4370 if interested. The church area is also available for wedding services, prayer services, concerts, plays, etc. Call 754-4370 for more details. We are still collecting aluminum cans for recycling. Bring them to the Corner House or call 754-4528.

## Notes from the Village Hall

**Cat & Dog Licenses:** Unspayed females and unneutered males are \$10.00 each. Spayed females and neutered males are \$5.00 each. You must show proof of a valid rabies shot. **A late fee of \$15.00 shall be assessed per dog or cat for failure to obtain a license by April 1, 2009.**

**April Election:** There will be a spring election on Tuesday, April 7th for the State Superintendent of Public Instruction, Justice of the Supreme Court, Village Trustees, Village President, Village Trustees, School Board and School Referendum. Polls will be open at the Reedsville Municipal Building, 217 Menasha St., from 7:00 am until 8:00 pm

**Chipping will done the 1<sup>st</sup> & 3<sup>rd</sup> Tuesday in the months of April thru October.** Clean woody vegetative material no greater than six inches (6") in diameter, and not less than four feet (4') in length can be shredded. Lumber (treated and untreated), skids, and other construction and demolition waste can not be shredded. Place near curb with cut ends facing street. If you are interested in this wood chips, the pile is located near the compost area.

**Compost:** Yard waste such as grass clippings, leaves, and yard & garden waste shall be disposed of by composting the material or leaving it at the Village compost site. Items NOT to be put in the compost are: stumps, roots, shrubs with intact root balls, animal waste, and sod. A sign will be erected by the compost that is ready to be used by the public.

**Vehicle Nuisance:** It is illegal for any partially dismantled, non-operating, wrecked, junked, unregistered or discarded vehicles to be placed or stored on any public or private property within the Village limits for a period of longer than five (5) days, unless said vehicles are stored within an enclosed building. This ordinance does not apply to property zoned for the sale or repair of vehicles. Having a vehicle behind your garage or under a tarp does not meet the requirement of an enclosed building.

## Community Under the Stars

There will be a CUTS meeting at Fox and Hounds on May 7th at 6:30pm. All those interested in participating need to attend. The event will be held this year on August 1st, at the Fire Fighter's Park and all organizations and community members are welcome to participate. If you have any questions please call 901-9417.

## Corner House

Spring Will Come!

Now it is up to us to brighten up our homes and businesses with spring flowers and plants.

Order Now for Easter - April 12th.

- Easter lilies will arrive April 2nd. Call 754-4370 and reserve your lily today. We will have centerpieces, corsages, door decorations, gifts, baskets, items for children, and plants. Come in, we are open M - F, 9:15-5:00, and Saturdays 9:15-noon.
- Order Prom flowers - April 18th. Wrist corsages as well as pin on are available. Boutonnieres for the guys. Don't wait - order quickly.
- Specials available May 1st. Celebrate May Day. Give your friend, spouse, and loved one a flower for a surprise.
- We do wedding and anniversary flowers. If you are celebrating we would love to work with you. Call 754-4370 to set up an appointment.
- Remember to call Corner House for your flower needs. We help you with funerals, birthdays, weddings, and other occasions.

## Holy Week Services

St. John-St. James Ev. Lutheran Church  
219 Manitowoc Street, Reedsville  
(Wisconsin Synod)

Maundy Thursday, April 9  
7:30 pm

Good Friday, April 10  
1:30 & 7:00 pm

Easter Sunday, April 12  
6:00 (Song Service)  
8:00 & 10:00 (Regular Service)

## SUNRISE HORSE FARM

### MARK YOUR CALENDARS

SATURDAY AT SUNRISE OPEN HOUSE MAY 16  
11:00 A.M. - 4:00 P.M.

FOOD SERVED BY COLLEEN'S CAFE  
HORSE RIDES, VENDORS, BAKE SALE  
DEMONSTRATIONS - ROPING, HOOF TRIMMING,  
WOOL SPINNING AND MUCH MORE

Watch for the May issue of REEDSVILLE NEWS  
for more details.

Anyone interested in donating items for  
the raffle or silent auction,  
please contact us at: 920-772-4135.

**WRITE-IN RITALYN R. SCHUH  
FOR VILLAGE TRUSTEE  
VOTE ON TUESDAY, APRIL 7**

**REEDSVILLE SPORTSMEN'S  
CLUB CHICKEN BOOYAH**  
SUNDAY APRIL 5TH  
SERVING FROM 10:00 A.M.  
TILL GONE. Hamburgers and  
refreshments also available.  
See you there!

## Reedsville Knights of Columbus, Council No. 5798 Seeking Scholarship Applicants

The Reedsville Knights of Columbus, Council No. 5798, is currently accepting applications from high school seniors for two \$200 scholarships.

The scholarship must be used for undergraduate full-time study at an accredited college or university. Applicants will be judged based on overall academic achievement, demonstrated extracurricular, church involvement, community and service involvement, and completion of the scholarship application form. Completed scholarship applications are due no later than April 10, 2009. To receive a scholarship application form, contact your local high school guidance counselor or write to Tom O'Connell, PO Box 325, Reedsville, WI 54230.

## Reedsville Fire Department Brat Fry

Saturday, April 11th  
10am - 2pm

At the Reedsville Fire Station  
Burgers, Brats, and Steak Sandwiches

Proceeds go towards the  
Reedsville Fire Department Museum

## Referendum Information for Voting Day

As the election on April 7 closes in, I want to use this last article on the election to show you the exact wording of the ballot questions as well as summarize the reasons for placing these two questions before the people of this district.

The first question, to exceed the revenue limit for operations, is the result a series of rules that make it difficult to respond to changing economic conditions. These rules mandate programs schools must offer, establish a minimum for salaries and benefits, and imposes revenue limits that dictate how much money districts can raise to fund operations. 70% of the school districts in Wisconsin, including Reedsville, have found that rising costs and declining enrollment have been combining with revenue limits to create a rising tide of red ink.

We have tried to anticipate and meet this challenge by cutting over \$500,000 in expenditures and spending over \$325,000 of our reserves over the last few years. A budget forecast, done by Baird, indicates we will need to reduce expenditures by \$300,000 for the 2009-10 school year, and an additional \$300,000 for the following year. We have reached the point of "Diminishing Returns" in our attempts to balance the books. I say that because the reductions mentioned above will result in degradation or loss of programs in the high school. If that happens, students seeking to take those classes no longer available will Open Enroll to other schools. Losing kids means a loss in revenue, which will mean we have to make more cuts in expenditures. It would be a vicious, downward spiral that ends with no school. The Revenue Control Law allows only one option to increase revenue. That option is a referendum.

So, when you enter the voting booth on April 7, the first referendum question will ask:

**Be it resolved that the School Board of the Reedsville School District, Manitowoc and Brown Counties, Wisconsin that the revenues in the School District budget be authorized to exceed the revenue limit specified in Section 121.91, Wisconsin Statutes, for the 2009-2010 school year by \$350,000; for the 2010-2011 school year by an additional \$350,000 (for a total of \$700,000); and for the 2011-2012 school year and thereafter by an additional \$350,000 (for a total of \$1,050,000) for recurring purposes consisting of ongoing operational expenses.**

You will be asked to vote YES or NO on this question.

Question #1 is a survival question.

What will it cost? The estimate from Baird is \$.66 for each \$1,000 in valuation in the first year, \$.87 per \$1,000 in year two, \$1.03 per \$1,000 in the third year. Year four shows an estimated \$.84 per \$1,000 and the rate will decrease in the following years.

Question #2 asks if the voters want to remodel the current high school. About a year ago, parents were surveyed to help establish priorities for the school district. Upgrading the high school was a top priority.

A building committee was formed, met several times, and finally recommended to the board that the facility be completely remodeled. The board followed that recommendation and placed this on the April 7 ballot.

The HVAC, electrical, and plumbing systems are original and would be replaced. Windows, roofs and doors would also be replaced. Security systems would be installed in both buildings. Some areas would be completely be remodeled, notably science, business, and family/consumer education. ADA requirements would be met. The wall on Mud Creek would be replaced.

The library media center would be expanded by making the current choir room a computer lab for school-wide access for all classes.

The Tech Ed area would be expanded with an addition, which would also provide space for storage and choir.

Every surface would be touched. When completed, we would have a new school, equipped for 21<sup>st</sup> century learning.

Why now? This is a great question and certainly relevant given the current state of our economy. There are two basic reasons the board chose to place this issue in front of the voters now.

The first is the fact that when the economic climate is bad, the building climate is good. Bidders are plentiful and interest rates are at almost historic lows. The estimated cost for Question #2 is \$1.00 per \$1,000 of valuation in the first year. Year two shows an increase of \$.26 for a total of \$1.26 per \$1,000. That \$1.26 per \$1,000 would remain, or decrease, for the remainder of the obligation. Waiting will only increase this cost.

The second is the board felt an obligation to those who responded to the survey and/or attended the informational meeting on December 10, and who strongly supported an upgrade of the high school. So the question is on the ballot and the voters will decide.

The second referendum question will ask:

**Be it resolved that the School Board of the Reedsville School District, Manitowoc and Brown Counties, Wisconsin, that there shall be issued pursuant to Chapter 67 of the Wisconsin Statutes, general obligation bonds in an amount not to exceed \$9,965,000 for the public purpose of paying the cost of constructing additions to and remodeling and renovation projects at the Reedsville High School including projects to improve energy efficiency and update technology infrastructure and equipment; acquiring equipment, furnishings and fixtures.**

Again, you will be asked to vote YES or NO on this question.

To summarize, if you want to continue the 150-year tradition of education here, the choice on question one is obvious. If you think the school should close, the choice is again obvious.

The choices in question two are not so obvious nor are they easy. I don't think any would argue that a new school would better prepare our kids to compete in a world-wide economy. I also think we could agree a new school would better attract prospective students and thus reverse the out-open enrollment trend. We know that we would benefit financially from a bidding and low interest rate prospective.

Do those factors outweigh the cost? That is a question each individual must answer.

Please vote. It is your school. You should have a voice in its future.

Thank you- Robert Scrivner  
Reedsville School Superintendent

## SPRING IS HERE!

BUT IF YOU CAN'T BREATHE, WHAT'S THE FUN IN THAT?

If you are one of those people who suffers from hay fever, then this information is for you. Technically, it's not hay fever, it's rhinitis, and pollen isn't the only thing that causes it. Year round rhinitis symptoms are usually caused by indoor irritants such as dust, dust mites, pet dander, feathers and mold. Rhinitis is an inflammatory condition that affects the sensitive membranes of the nasal and sinus passages, the eyes and the throat. Anytime the sensitive membranes in your upper respiratory tract are exposed to irritants, inflammation can occur. Tissues swell and mucus is secreted to try to flush the irritation away.

Seasonal allergic rhinitis, which occurs during specific seasons of the year, is always caused by pollen. In most people, these symptoms include sneezing; wheezing; stuffiness; itchy, runny nose; post-nasal drip; itchy, watery eyes; conjunctivitis; earaches and insomnia.

If you suffer from allergic or non-allergic rhinitis, there are a number of Nature's Sunshine supplements that can help open your airways and ease your symptoms:

AL-J is an allergy-relieving, expectorant and decongestant formula. It contains herbs that improve digestive function and lymphatic drainage. It is a valuable remedy for allergic rhinitis linked with food allergies or problems in the gastrointestinal tract. It is particularly useful for allergic reactions in children.

HISTABLOCK acts as a natural antihistamine formula. It contains bioflavonoids, particularly quercetin, which stabilizes mast cells in the immune system, inhibiting the release of histamine. HISTABLOCK should be taken before allergy season starts.

SINUS SUPPORT is very good for clearing a stuffed-up head. It's the best formula for rhinitis or sinusitis that is of long duration.

For more information and a free newsletter on this topic, contact me at:

Roadway To Health  
Mary Ellen Kiel  
920-77-4135

maryellen@mynsp.com

www.mynsp.com/maryellen

April specials - Respiratory system products  
25% off retail price

**I am a candidate for the  
Reedsville School Board and I am  
asking for your vote on April 7<sup>th</sup>.  
Robert J. Campana**

**Great Schools  
Benefit Everyone!**

Many thanks to the Reedsville, Collins, and Whitelaw Fire Departments, the Reedsville First Responders, the American Red Cross, and the Reedsville Veterinary Associates for all of their help during our recent house fire.

We would also like to extend a special thank you to Diane Geiger for calling Lori to wake her up and inform her the house was on fire and for her help in contacting 911. Cassie Weinreis for all her help and support. Our daughter and son-in-law, Christy and Brevet Larsen, for taking us into their home and all our family, friends, and neighbors for stopping by to make sure we were okay and for helping us during this difficult time.

Your thoughtfulness will never be forgotten.

Sincerely, Gene and Lori Bauknecht

### **BOTTLED WASTED ENERGY**

"Talk about an energy drink. The first comprehensive and peer-reviewed energy analysis of a bottle of water confirms what many environmentalists have charged. From start to finish, bottled water consumes between 1100 and 2000 times more energy on average than does tap water. Bottled water consumption has skyrocketed over the past several years. In 2007, some 200 billion liters of bottled water were sold worldwide, and Americans took the biggest gulp: 33 billion liters a year, an average of 110 liters per person. That amount has grown 70% since 2001, and bottled water has now surpassed milk and beer in sales."

SOURCE - <http://sciencenow.sciencemag.org/cgi/content/full/2009/226/2>.

### **IS YOUR WEBSITE TIRED AND WORN OUT?**

Whether you're in need of a new design or a complete overhaul,  
*I can help!*

- \* Design
- \* Redesign
- \* Development
- \* Hosting
- \* More!

**FREE one-hour consultation!**

**Wondrous Webs** Web Development & Design

920-905-0760

<http://www.wondrouswebs.com>

## Win the Battle with Allergies this Spring

The refreshing switch to springtime leaves many people dealing with dreaded spring allergies. Thirty percent of the United States population suffers from allergies, which usually first develop in infancy and early childhood.

Allergies cause an increased sensitivity to pollens and molds, occurring when these substances come in contact with the nose or bronchial tubes.

As temperatures rise, trees and grass begin to release pollen. In addition, outdoor mold thaws from its dormant winter state. There are strategies to relieve the symptoms that put a damper on your enjoyment of the seasonal change.

The American Academy of Allergy Asthma and Immunology (AAAAI) suggests visiting your health care provider to discuss the use of allergy medications before the pollens and molds hit hard. Non-drowsy antihistamines are essential for battling symptoms.

Environmental control strategies are important during this time of year. Consider keeping windows and doors shut in your home and car. If needed, start running your air conditioner earlier in the season to keep the air inside less stuffy.

Avoiding outdoor activities in the early to mid-morning hours is crucial. This is the time when pollen is at its highest point for the day.

When you experience nasal and sinus congestion, use nasal saline to rinse out your nasal passages up to twice daily. Keeping nasal saline on-hand is useful for unexpected triggers during travel or switching between daily indoor and outdoor activities.

If these tips fail to work for you, we can refer you to an Aurora board-certified allergist in Two Rivers. Allergy shots may be an option if medications and environmental control strategies do not provide enough symptom control for you.

For more information, visit [www.AuroraHealthCare.org](http://www.AuroraHealthCare.org).

*Denise Brilliant is a nurse practitioner at Aurora Health Center in Reedsville. To schedule an appointment, call (920) 754-4337.*

### Reedsville Summer League Sign-Up

Sign-up for summer league baseball and softball, sponsored by the Reedsville Athletic Association and Manitowoc County Youth Sports, will be held on Monday, April 6th at the Reedsville Elementary/Middle School Gym.

**Sign-up for girls softball will be at 6:30pm.**

Levels of play are:

- Grade school modified - cannot be 12 years old by June 1st.
- Junior Fast Pitch - cannot be 15 years old by June 1st.
- Senior Fast Pitch - cannot be 19 years old by June 1st.

**Sign-up for boys will be at 7pm.**

Levels of play are:

- Peanuts - cannot be 10 years old by June 1st.
- PeeWee - cannot be 13 years old by June 1st.
- Pony - cannot be 15 years old by June 1st.
- Colt - cannot be 19 years old by June 1st.

Permission slips and fund-raiser info will be handed out. If you cannot make the sign-up the contact persons are: Grade school modified, Jr. & Sr. Fast Pitch - Dan Bratz, 754-4848. Peanuts - Cory Kiekhaefer, 754-4092. PeeWee - Bob Ebert, 754-4818. Pony - John Sloma, 754-4707. Colts - Tom O'Connell, 754-4413.

The RAA is in need of a T-ball Director. Please call Tom Dvorachek, 754-4726 for information.

### The deadline for the next Reedsville News is April 17th.

Submissions must be in writing or e-mail and should include your contact information. Please submit your news or opinion to the below contact and include your contact information.

Reedsville News,  
217 Menasha St.  
Reedsville, WI 54230  
[ragd@reedsville.org](mailto:ragd@reedsville.org)

### Saint John - Saint James Lutheran 3K & 4K

St. John-St. James Lutheran School 3K& 4K is now accepting applications for the 2009-2010 school year. We would really like you to join us!

Enrollment is open to all children who will be 3 or 4 by September 1, 2009.  
3K meets Tuesday and Thursday 8:30-11:30  
4K meets Tuesday, Wednesday, Thursday 8:30-11:30

For more information and an application, please call the school office - 754-4432, 223 Manitowoc Street, Reedsville.

**Recycling Workshop  
633 Manitowoc  
Street**

Turn Your Aluminum  
Cans into Cash  
**920-754-4021**



**Hours: Mon - Fri  
8 - 5  
Saturday  
8 - noon**

**FOR SALE**  
14X60 mobile home  
(must be moved).  
Completely  
remodeled inside  
and out Call  
920-772-4135

**DOG MISSING**  
3 year old Beagle mix  
missing since November from the  
Grimms area. His name is Otis and he  
loves to scratch your leg so you pet  
him. If you have any information,  
please call 920-772-4135.



**950 West Ryan Street – P. O. Box 7  
Brillion, Wisconsin 54110-0007  
920-756-2272 or 1-866-756-2270**

**Investments\***

- Investment Advisory Services\*
- Stocks ♦
- Bonds ♦
- Mutual Funds\*
- Exchange Traded Funds\*
- College Plans, 529's, Coverdell's\*

**Wealth Management**

- Investment Management\*
- Cash Flow & Debt Management
- Family Risk Management
- Retirement Planning
- Education Planning
- Legacy Planning
- Business Planning
- Special Situations Planning

**Tax and Accounting**

- Income Tax Planning & Preparation
- Giving or Receiving Gifts or Inheritances
- Charitable Donation Strategies
- Business Accounting

**Insurance**

- Auto / Home / Disability / Life
- Health / Long Term Care
- Fixed & Variable Annuities\*

**Andrew Schneider,  
Enrolled Agent, Financial Advisor\* ♦**

**Philip Mecca,  
Certified Financial Planner\***

\*Securities offered through H.D. Vest Investment Services (sm),  
Member: SIPC. Unity Financial LLC is not a registered broker/  
dealer or independent investment advisory firm. Advisory services  
offered through H.D. Vest Advisory Services(sm), non-bank  
subsidiaries of Wells Fargo & Company.

**Beat the Rush  
Lawnmower Tune-Up Time**

- New Sparkplug
- New Air Filter
- Oil Change
- New Fuel Filter
- Sharpen and Balance Blades
- Level Deck (Riders)
- Clean Mower

**We Service All Brands!**  
**Valu Pro**  
**Power Center**  
**202 Industrial Drive**  
**Reedsville, WI 54230 754-4400**

**Easter Dinner at Fox & Hounds**  
**Sunday, April 12th**  
**Chicken & Ham Family Style**  
**and all the fixings.**  
**Includes yummy desserts.**  
**\$9.95**  
**Make reservations - 754-4086**

Call now to make first communion,  
graduation, shower parties, or any  
other occasion at Fox & Hounds.  
We also cater to your home or business,  
call 754-4086.

**Lexi's Family Daycare**

Reedsville / Whitelaw Area  
2 miles north of Hwy 10  
\$3.50/hr with \$80 minimum  
Hours 6:30 am - 5:00 pm Monday - Friday  
6 years experience  
References Available  
For more information call - 754-4324